

**WIN!**  
**A TESCO**  
**HAMPER**  
UK ONLY T&C'S APPLY

Saved by  
Superglue



My  
miracle  
baby!

Secrets to  
staying slim

Real women's tips!



July 31 2010 No. 5033  
Can \$3.50 Spain €1.75  
NZ \$3 (Inc GST)

NO.1 FOR FICTION!

# My Weekly

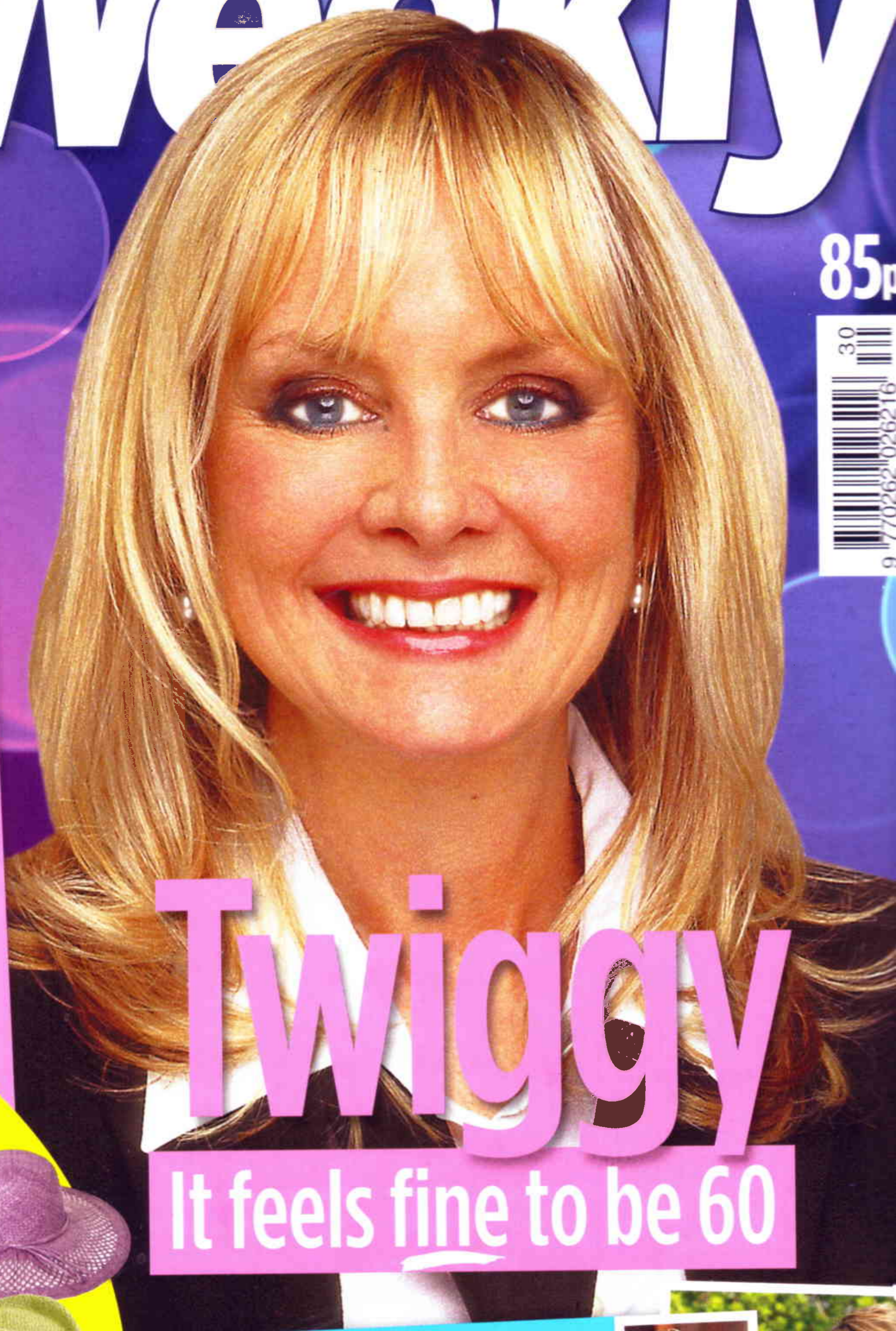
GET READY FOR YOUR  
**BEST EVER**  
**BARBECUE!**



GREAT NEW RECIPES!



Cool  
Summer  
Hats  
To suit  
your style!



# Twiggy

It feels fine to be 60

Coping with stress  
Dr Christian gives  
sympathetic advice



85p



# Easy Make, Easy Do

Super projects and products for your home, garden and outdoors



## DID YOU KNOW...?

The British love eccentrics and doing things their own way in the home, garden – even with the food we eat. So we've chosen some products that we've come to love down through the years – with a bit of an eccentric twist, of course!



Jeeves Pendant Light – The French Bedroom Company £150

Union Jack Biscuit Barrel – Emma Bridgewater £13



## GORGEOUS GARDENS

Soak up the sun in your deckchair, get passionate about your passiflora, or enjoy a game of skittles with your ice-cool beer



Hardwood British Deckchair – Berry Red £125



Wooden Skittles – Dotcomgiftshop £39.95

Sylvester Bird Box – Prezybox.com £19.95



AnySharp Edge – anysharp.com £14.99



## HOT HOMEWARE

Enjoy afternoon tea and cakes on a classy and feminine stand and tea served in a pretty teapot, cup and saucer. And if you have an even sweeter tooth, why not fill this jar with your fave hard boiled delights, or perhaps a Bon Bon or two?



Glass Jar English Confectionery – Dotcomgiftshop £6.95

Regency Cake Stand – Spotty Button £27.95



Rose Teacup Set – Jasmine Way £30



## STEP-BY-STEP

### Shell Frame

#### WHAT YOU NEED:

- Clip frame
- Coloured card or paper
- Double-sided tape
- Mount
- Acrylic paint
- Wooden shapes
- Silicone glue
- Shells
- Starfish

#### HOW TO MAKE:

**1** Unclip the glass from the frame and put it aside. Cut a



rectangle to fit the frame from the coloured card and, with double-sided tape, place the mount over the top.

**2** Place the glass back on top of the mount and secure with the clips.

**3** Paint the wooden shapes and leave them to dry.

**4** Using silicone glue place several blobs on to the back of one of the wooden shapes, then gently place on the top left-hand corner of the frame. Do not push down flat to the surface as you want this to look three-dimensional, so it needs to sit about 1cm above the glass.

**5** Repeat with a second wooden shape and place it on the bottom right hand corner of the frame.

**6** Spread silicone glue on to the glass making a border around the mount and arrange the smaller shells, pushing them neatly into the glue. Finish off with the starfish on top.

### TIP!

CONTACT YOUR NEAREST HOBBYCRAFT SUPERSTORE DIRECT BEFORE YOU BEGIN, TO CHECK THEY HAVE YOUR REQUIRED PRODUCT IN STOCK TO SAVE ANY DISAPPOINTMENT

**HOBBYCRAFT**

www.hobbycraft.co.uk